

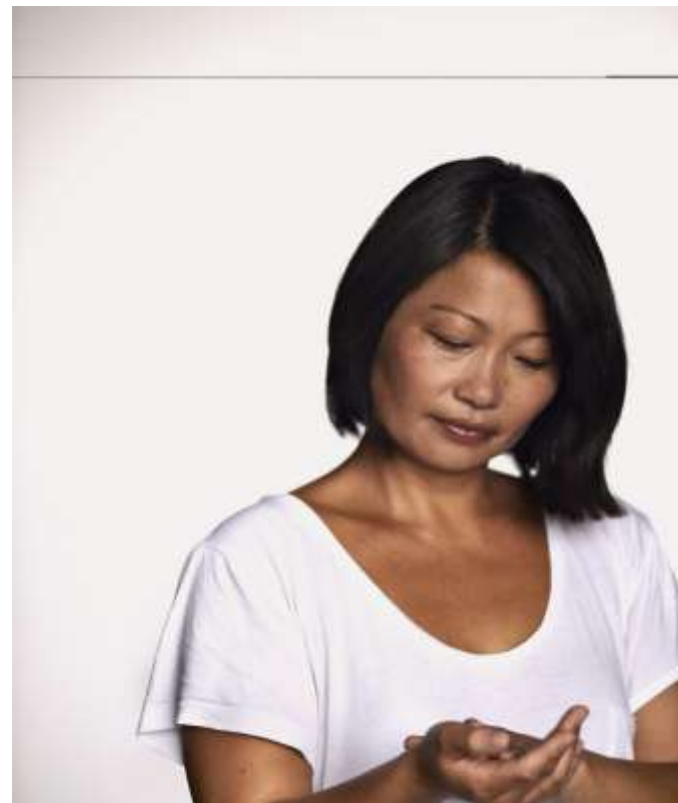
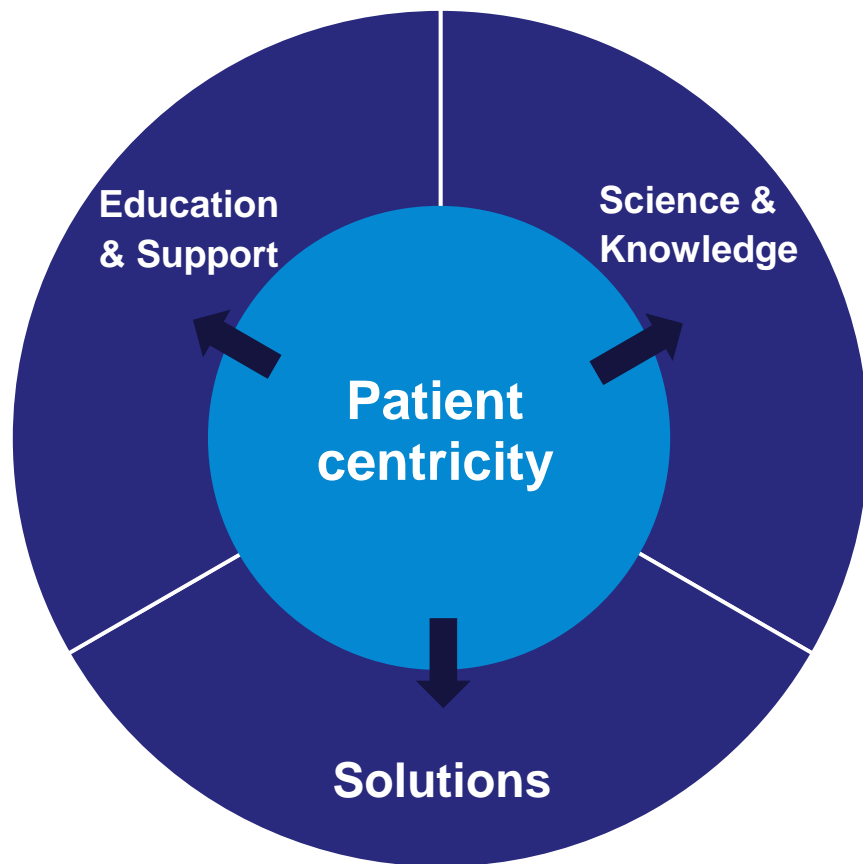


Enhancing flexibility demands strong internal collaboration

LEO[®]

Presenter: Mila Vrančić, PhD
R&D Alliance Manager





Challenges?

Dermatology – main focus

- Drug discovery and development activities restricted to a narrow TA
- Specific bioanalysis requirements

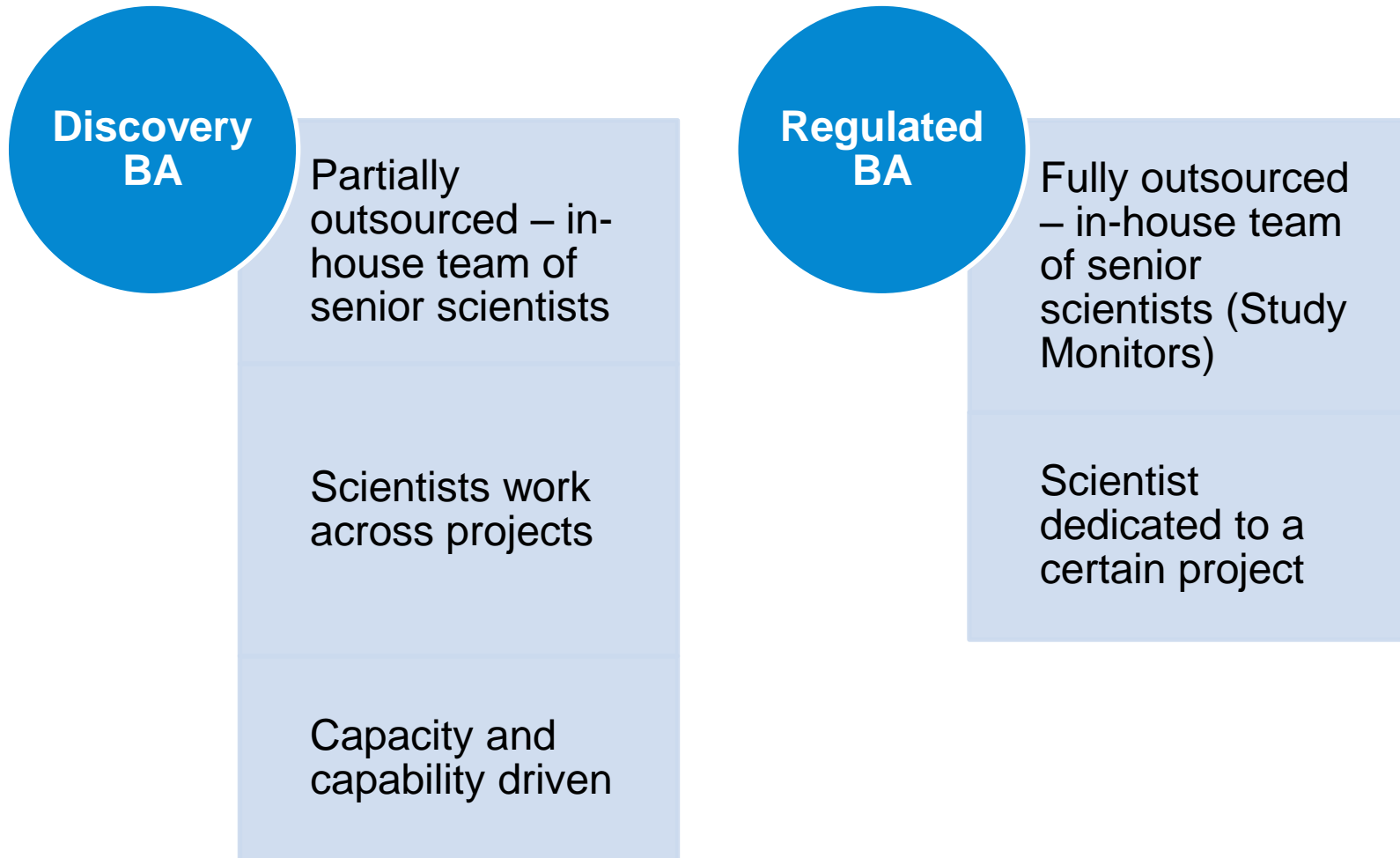


Challenges in the selection of potential collaborators

Bioanalysis in LEO R&D

25 March 2015

p. 04



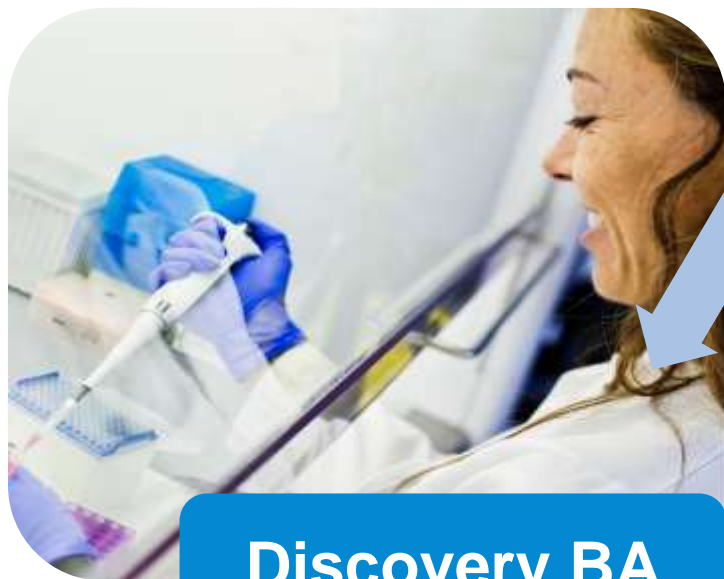
Fit for purpose approach

Quality and expertise



LEO BA Outsourcing strategy

LEO
Outsourcing Manager



Discovery BA
Drug Design
Department



Regulated BA
Skin Research
Department

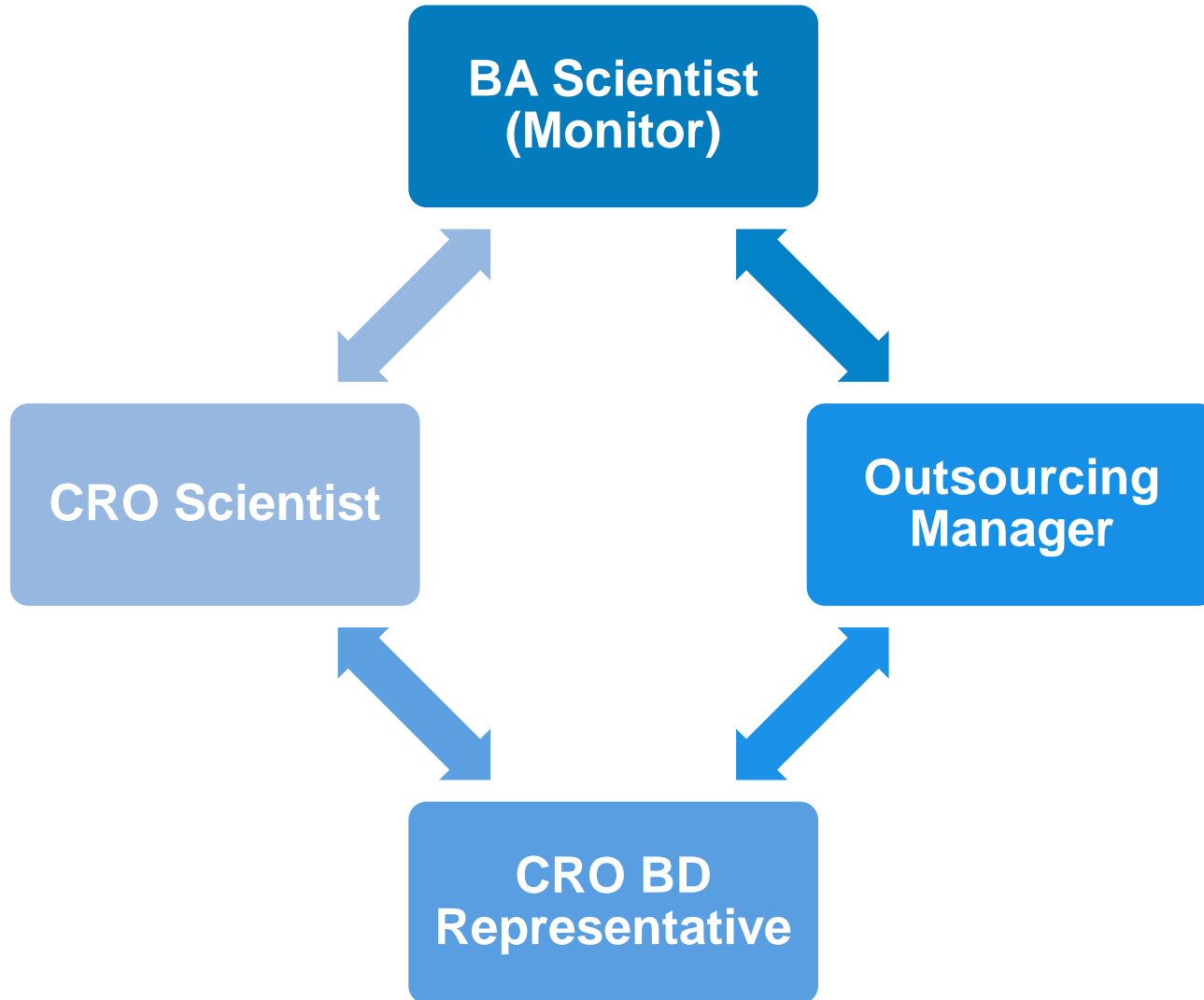
+ alignment with Clinical Outsourcing Department



General collaboration structure

25 March 2015

p. 06

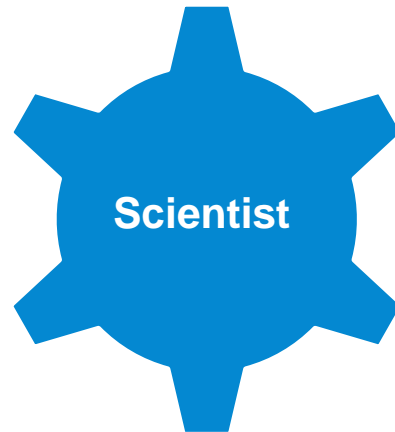


Scientist

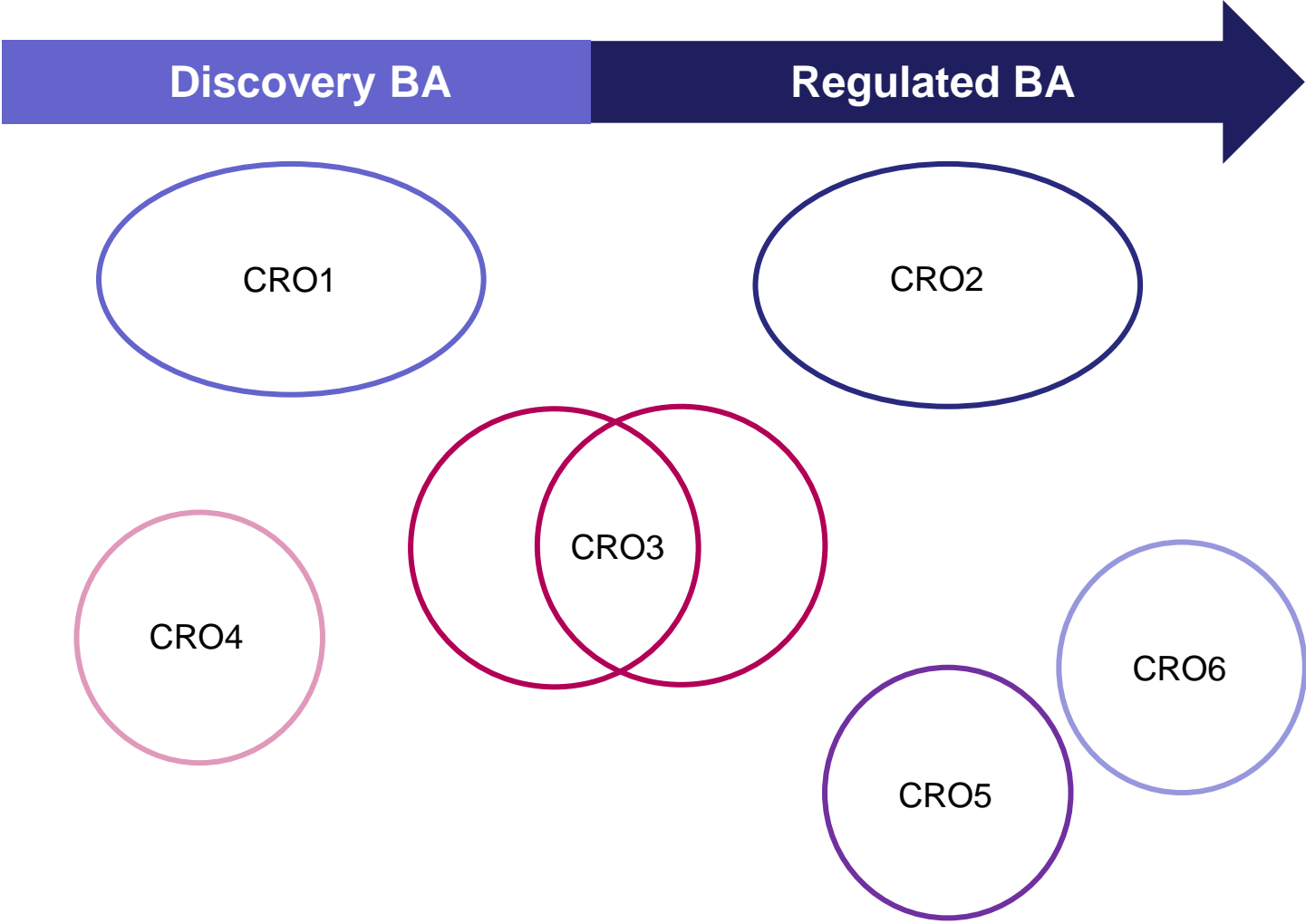
- Selection of external partner based on a set of relevant criteria
- All scientific matters

Outsourcing Manager

- Overview of partners and activities
- All contractual matters
 - drafting, negotiation and finalization of agreements



External collaborations



THANK YOU

